



# Dublin

## SURVIVAL GUIDE

[www.liffeycollege.ie](http://www.liffeycollege.ie)



# How to survive in Dublin



## Keep Calm and Believe

Have you ever thought about changing your life?

Making your home in a new city can be hard. It takes lots of planning to relocate, but that's just the start.

Getting settled in Dublin takes time, but plenty of resources are available and we are here to help you!

Are you ready to start the journey of a lifetime?



more info [www.liffeycollege.ie](http://www.liffeycollege.ie)





## Airport

Many students are afraid of going abroad mainly because of immigration. But remember: you are not doing anything wrong. So there's no need to be afraid. Just smile and be happy!

When you arrive at the airport, you will go through immigration. Documents must be presented to the immigration officer: school letter, proof of 3,000 euros, letter of accommodation or fixed address, passport valid for at least the next six months, return flight ticket and health insurance policy.

### Tips for passing through immigration:

- Keep calm
- Don't be nervous
- Don't take pictures or record videos
- Do not use your mobile phone
- Remove glasses, hat or anything concealing your face



more info [liffeycollege.ie/blog/](http://liffeycollege.ie/blog/)







After presenting your documents and answering some questions, the immigration agent will stamp your passport with a provisional visa, which can be from one week to three months, enough time for you to apply for your IRP (Irish Residency Permit)/study visa. More on this topic below.

Exiting Dublin airport is easy. If you have not booked the airport transfer service with the agency, there are several regular buses and Aircoaches which go to the city centre. Apart from public transport, you can also choose to take a taxi (around €40 to the city centre).



## IRP: Student Visa Stamp 2

To stay in Ireland to study English for longer than 90 days, you must apply for the Stamp 2.

Stamp 2 indicates permission to study a full time course on the official Interim List of Eligible Programmes (ILEP) for a specified period, subject to conditions.

You should book an appointment to register with Immigration up to 10 weeks before you travel to Ireland in order to show this to the Immigration Officer. For more info see the following link:  
<https://burghquayregistrationoffice.inis.gov.ie/>

**Important:** Students must be aware of the school documents they need for their appointment with Immigration. These will be provided **ONLY** during the Induction week (after your course start date).

### What do I need to bring to my Inis appointment?

- Passport
- Medical Insurance (given by school)
- Enrollment Letter (give
- Proof of € 3000



### Appointment link

**Burgh Quay  
Registration Office**



13/14 Burgh Quay, Dublin 2  
8h-21h



[www.irishimmigration.ie/](http://www.irishimmigration.ie/)



## School: First Steps

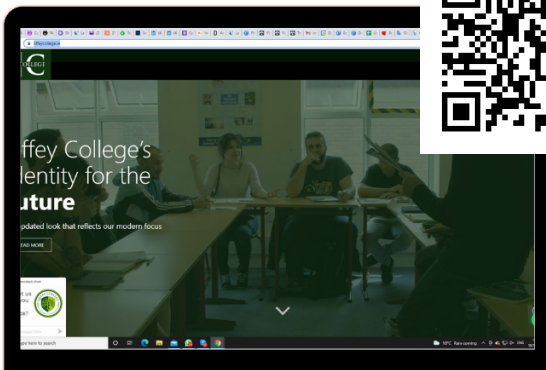
After arriving in Ireland, on the date written on your **Acceptance Letter**, contact Liffey College at [induction@liffeycollege.ie](mailto:induction@liffeycollege.ie) to start your induction.

You will take a level test to determine your starting level and we will provide you with all the information you need to know about your course.

Make sure you read our policies, terms and conditions carefully.

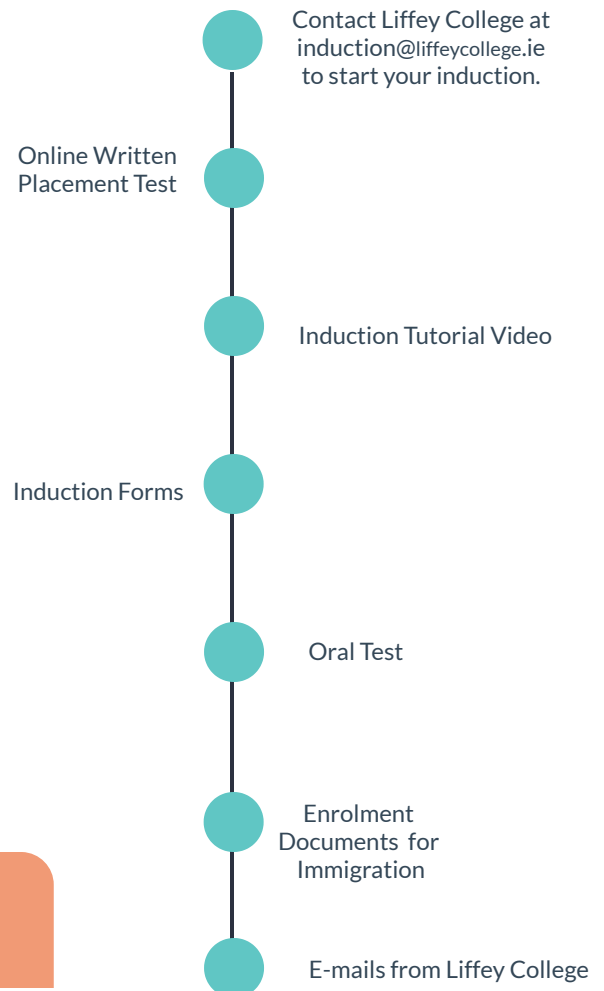
They are also available on the Liffey College website: [liffeycollege.ie/policies-procedures/](https://liffeycollege.ie/policies-procedures/)

For a full list of steps to register and come study in Dublin, please see:  
<https://liffeycollege.ie/steps/>



After your induction, you will be officially enrolled at Liffey College and we will send you your final documents (enrolment letter and insurance details) to register with Immigration.

We will also send you your **login details** to access your student panel. In your student panel you will find all kinds of services and information: you can view your messages and your attendance, submit requests (for holidays, time change, level change, etc.) and access extra resources in "Files and Links."





## PPS

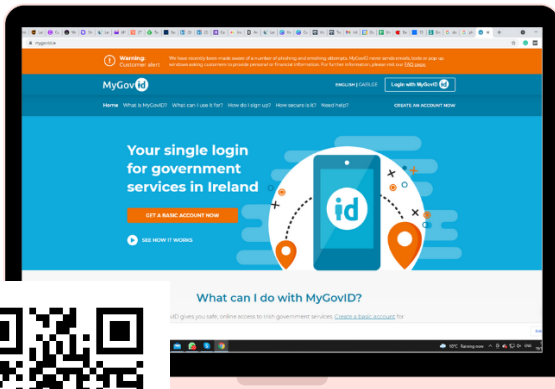
PPS is your Personal Public Service Number.

### Why is it important?

- It is a registry for accessing social assistance benefits, information and public services.
- It is essential to work and open a bank account in Ireland.

### How to apply for your PPS?

- First of all, you need a basic MyGovID account. Sign up by accessing [mygovid.ie/](https://mygovid.ie/)
- You can apply online for a PPS number using [MyWelfare.ie](https://mywelfare.ie/) which will give you access to a range of government services online.



### Necessary documents

- Proof of identity: Passport;
- Proof of address: Enrollment letter with your Irish address or, if you have an account in your name, it is also accepted;
- Proof of why you need the PPS: Job offer, registration for driver's license

### Quick Reminder:

You do need a job offer to get your PPS number. We regularly post on our media channels job offers. Stay tuned!





## Jobs

To settle down in a new city, you might need to find a job as soon as possible. Foreign students generally start by working in casual jobs, which pay a good salary, usually above the European average.

In this case, the most convenient way to get a job in Ireland is to go out looking for vacancies and deliver resumes in pubs and restaurants,. You can also get a job by referral.

It is very common for a roommate or a schoolmate to say that the place where they work is in need of people. So networking is important!

Also look for groups and jobs in Ireland on Facebook. You can also apply for jobs on employment websites in Ireland. We list the main ones below:

Jobs.ie  
Indeed.ie  
Jobs on Facebook  
Facebook Groups  
Linkedin

★ CV | Before applying for a job, don't forget to tailor your CV. This is important as it is your first and maybe only direct communication with a potential employer.



It is essential that your CV is clear and organized. Information such as nationality, languages and professional experience abroad is essential for potential employers to know.

Including information such as your PPS number or a photo is not mandatory. However, it is very important to put the type of visa next to the nationality, for example: "Mexican - Stamp 2" or "Brazilian - EU Citizenship".

**Career Guidance:** We can help you take the next steps in your professional life. Count on us! Book an appointment with a member of our team to help you reach the next level.





## Public Transport

In Dublin, there are three types of public transport: the bus (Dublin Bus), the train (Dart) and the VLT (Luas). A great tip for students is to use Dublin Bus, as it is the cheapest way to get around. The use of bikes is also very common.

The Leap Card is the local public transport card and with it you can travel around the city for a week for only €20. Students will also receive discounts on fares across public transport services nationwide.



### What do you need to apply for?

- You will need the school letter that proves you are a student.
- Fill in a form with such information as: address, telephone number, school, age and nationality.

### Applying for a Student Leap Card

- You can apply for your new Student Leap Card online through [leapcard.ie](http://leapcard.ie)
- You will still have to attend an official SLC Agent and show a valid college/school ID to get your card.
- There are agents located across the city that can print your brand new Student Leap Card within minutes.

## Get your phone up

There are three main mobile networks in Ireland: Vodafone, Three and Eir.

If you have a phone already, switching to one of them should be relatively straightforward. You can just buy a sim card.

Irish phone networks allow you to pay through pre-paid credit or a monthly bill. There's a huge range of plans available, so it's a good idea to use a comparison site like [Switcher.ie](http://Switcher.ie) to find the best option for you.







## Accommodation

Your accommodation is something you need to worry about if you are going to stay longer in Dublin. As prices are getting higher and higher with fewer nice options, it is recommended that you start doing research before you arrive.

**Warning!** Do not pay for any accommodation until you see the place so you don't have any problems later. Sites like Daft.ie advertise lots of accommodation options.

## Bank Account

Having a bank account will make life easier, so getting one early on is a good idea.

If you don't have an online bank, such as Revolut or N26, to open a bank account at an institution in Ireland, you will need to present some documents, such as your passport, proof of residence, PPS (depending on the bank), certificate of tax credits, and an Irish telephone number.

**Important:** Liffey College **does not** provide a bank letter due to Bank of Ireland's regulations on student bank accounts.

### Step by step

1. Schedule an appointment to open an account at a bank branch;
2. On the appointment day, have all the documents in hand;
3. Once opened, your account will be active within 24 hours. The bank card and your password will arrive at your home through correspondence. Delivery time is 5 to 7 business days.

### Banks in Ireland

- AIB
- Bank of Ireland





## Health Insurance

Students from non-EU countries are not covered for any free medical attention off-campus and must therefore have their own private insurance.

Please note that heavy levies are charged for all hospitalisation and it is advised to make provision for adequate medical insurance.

Non-EU students are required to show proof of comprehensive medical insurance when registering with the Garda National Immigration Bureau. Proof of health insurance is also required when applying for a student visa and that will be provided during the Induction week.

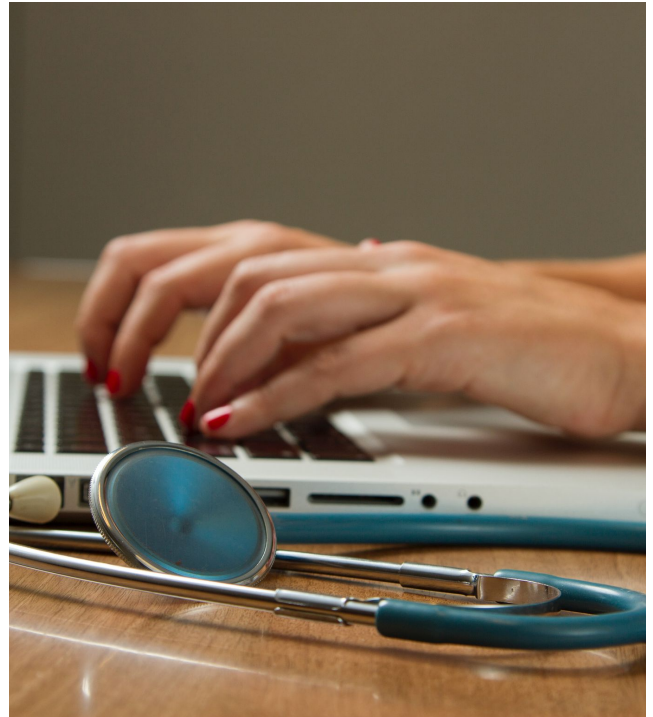


Basic health insurance is included in our fees; however students must be aware that it only covers emergencies in public Irish hospitals.

For the sake of safety we advise students to keep a copy of their polices just in case.

### **Had treatment for an accident or needed urgent medical assistance?**

CEGA Travel Claims Telephone:  
+353 (0) 1 431 9814



## Quirks of Ireland

Drivers drive on the left side of the road, just like in England.

Be very careful when crossing the street and read the signs painted on the roads.

There are no power outlets in the bathrooms!

The outlets in Ireland are 220v.

The sockets have three holes, and you will need to buy a socket adapter.







## A few more things

We all know how hard it is to settle down in a new country where you don't really understand the language, the people or the culture.

It takes around three months to get to know the basics, but as you start making friends and experiencing the local culture, things will start happening!

We wish you all the best in your journey. As a school, we are happy to provide the foundation for your personal and professional development.

We will do our best to provide you with an unforgettable experience.

Count on us: We are here to help you!

Warm greetings from all of us,

The Liffey College Team

